



Pediatric Anthropomorphic Training Phantoms

Model 715 Series



SPoRT™ The World's First Sectional Pediatric Radiography Trainer

An ideal addition to any imaging department or Radiologic Technology training program, the CIRS Model 715 Series can assist in the monitoring, training and improvement of parameters and protocols common to most pediatric imaging procedures.

SPoRT™ is designed to aid teaching and improvement of patient positioning, collimation and anatomical comprehension and its wide range of features facilitate effective instruction of safe, high quality, pediatric imaging.

The phantom represents a typical 5-year old in both size and structure, making it portable and easy to position. The full body with head, arms and legs measures 110 cm (43 in) tall and weighs 20 kg (44 lb).

Components are made from propriety urethane and epoxy materials that mimic X-ray attenuation properties of human tissues for both diagnostic and therapy energy ranges (50keV-25MeV). The materials are durable, impact resistant and suitable for continuous handling.

SPoRT™ can be used in film radiography, CR, DR and Computed Tomography.

The Model 715 series consists of six sectional phantoms available separately or as a complete set. Complete set includes head, trunk, right and left arms with natural and oblique hand positions and right and left legs with natural and plantar flexion foot positions.

2428 Alameda Avenue Suite 316 • Norfolk, Virginia 23513 • USA
Tel: 800.617.1177 • 757.855.2765 • Fax: 757.857.0523

WWW.CIRSSINC.COM

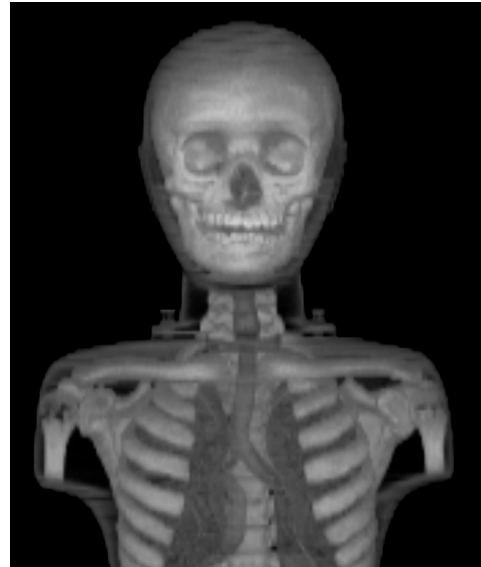
CIRS

Tissue Simulation & Phantom Technology

A New Pediatric Standard for Anatomical Comprehension, Instruction and Training



AP Skull



3D Reconstruction

DETAILED ANATOMICAL STRUCTURES AND UNIQUE FEATURES

- Deciduous and descending teeth with distinct dentine and enamel
- Fully open sinus cavities
- Anthropomorphic lung structure and vasculature
- Bones contain cortical/trabecular distinction, growth plates and ossifications typical to a 5-year old
- Certain bones of the spine and pelvis are atypical to a healthy 5-year old. The bones are modeled from human samples that include various anomalies.
- Specific pathologies can be custom manufactured if required
- Pediatric phantoms are translucent to enable visualization of anatomy however opaque models are available



Lateral Skull



Lateral Lumbar Spine



Oblique Hand/Wrist



AP Chest



AP Shoulder



AP Pelvis

SPECIFICATIONS



Trunk Model 715-T

Includes:

- Chest
- Rib Cage
- Spine
- Spinal Disks
- Lungs
- Bronchial Tree to third bifurcation
- Lung Vasculature
- Trachea
- Scapula
- Clavicles
- Top Third of Humerus
- Pelvis
- Top Third of Femur

Weight: 9.85 kg**Dimensions:**

43.5 cm H x 24 cm W x 14 cm D
(posterior-anterior)



Head Model 715-HN

Includes:

- Skull
- Homogeneous Brain
- Sinus Cavities
- Ear Canals
- C1-C7 Spine
- Spinal Disks
- Deciduous and Descending Teeth with enamel and dentin
- Positioning stand

Weight: 2.75 kg**Dimensions:**

21 cm H x 14 cm W x 17 cm D
(posterior-anterior)



Right Leg Model 715-L-R

Includes:

- Knee in natural position
- Full bone structure
- Foot in relaxed position

Weight: 2.50 kg**Dimension:**

46 cm L x 9 cm W x 18 D

Left Leg Model 715-L-L

Includes:

- Knee in natural position
- Full bone structure
- Foot in plantar flexion

Weight: 2.50 kg**Dimension:**

51.5 cm L x 9 cm W x 18 D



Right Arm Model 715-A-R

Includes:

- Elbow in natural position
- Full bone Structure
- Hand in natural position

Weight: 0.7 kg**Dimension:** 37.5 cm L x 8 W x 7 D

Left Arm Model 715-A-L

Includes:

- Elbow in natural position
- Full bone Structure
- Hand in oblique position

Weight: 0.7 kg**Dimension:** 37.5 cm L x 9 W x 5 D